

REVISIONS



1909B.M00  
TURPIN & RATTAN  
Consulting Engineers  
10000 DEL MAR BLVD, SUITE 200  
DANA POINT, CA 92629-1888  
TEL: 949/349-1487  
FAX: 949/349-1487

NORWALK LA MIRADA UNIFIED SCHOOL DISTRICT  
**LA MIRADA HIGH SCHOOL NEW FOOTBALL  
STADIUM PROJECT**  
13520 ADELFA DRIVE, LA MIRADA, CA 90638

DSA # 03-120551

**NAC**  
ARCHITECTURE

NAC NO. 161-19015  
DATE 12/10/2020

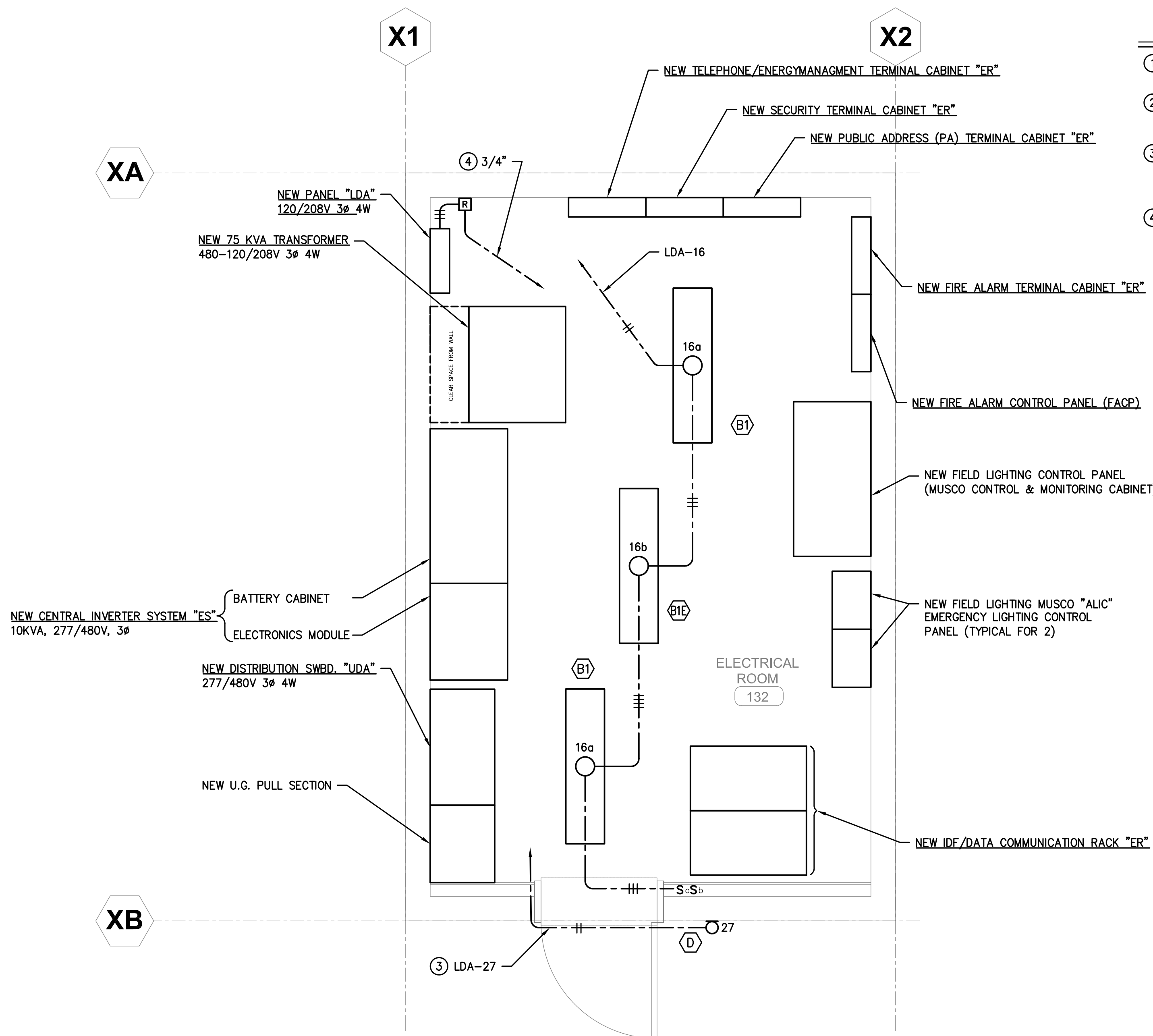
DSA BACKCHECK  
SUBMISSION

FLOOR PLANS  
BUILDING "X" -  
ELECTRICAL

**E9.01**

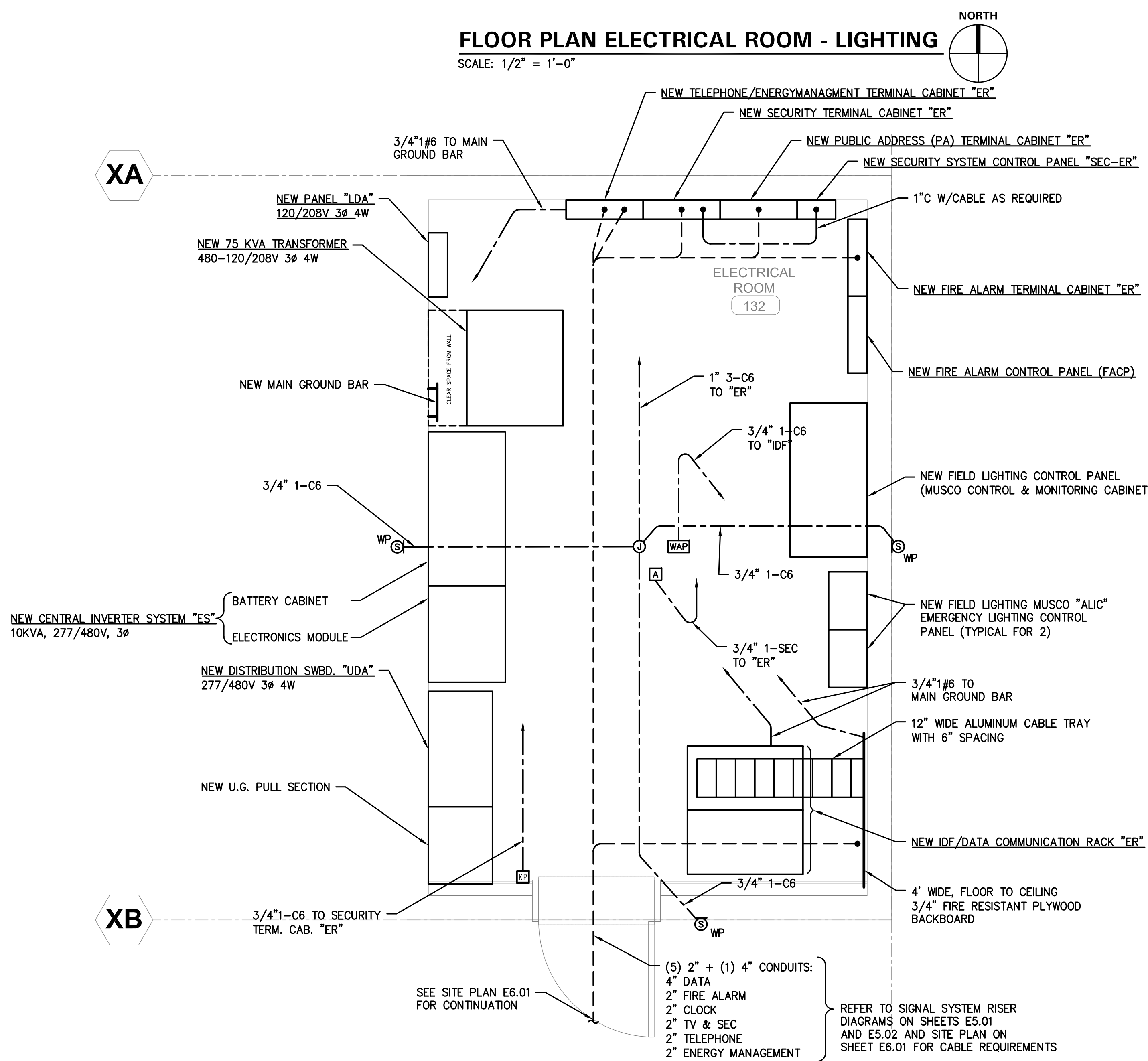
KEY NOTES - THIS SHEET ONLY

- 1 REFER TO MECHANICAL CONTROL DIAGRAMS (M0.03 & M0.04) FOR CABLE/CONDUCTOR REQUIREMENTS.
- 2 LOCATE TRANE BACNET INTERFACE, NETWORK LINK AND CONTROL PANEL IN IDF/IDF CABINET - COORDINATE LOCATION IN THE FIELD WITH CONTROLS CONTRACTOR.
- 3 CIRCUIT FOR EXTERIOR LIGHTING SHALL BE CONNECTED TO A NEW RELAY LOCATED ADJACENT TO PANEL "LDA". NEW RELAY SHALL BE CONTROLLED BY THE "AUTOMATED LOGIC CORPORATION" CONTROL SYSTEM.
- 4 TO IDF-ER, CONNECT TO NEW "ALC" CONTROLS. COORDINATE CABLE/CONDUCTORS REQUIRED WITH CONTROL CONTRACTOR.



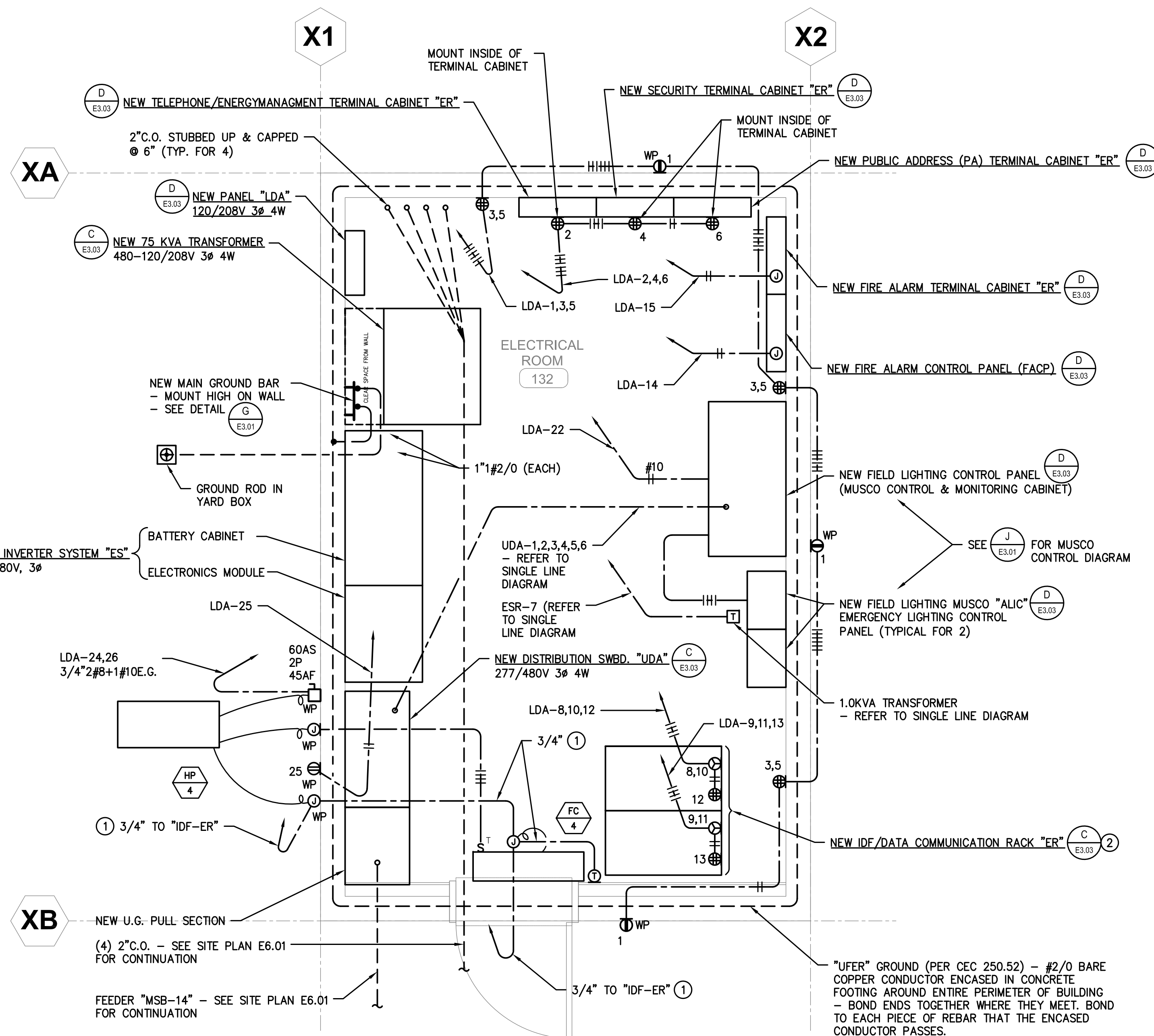
FLOOR PLAN ELECTRICAL ROOM - LIGHTING

SCALE: 1/2" = 1'-0"



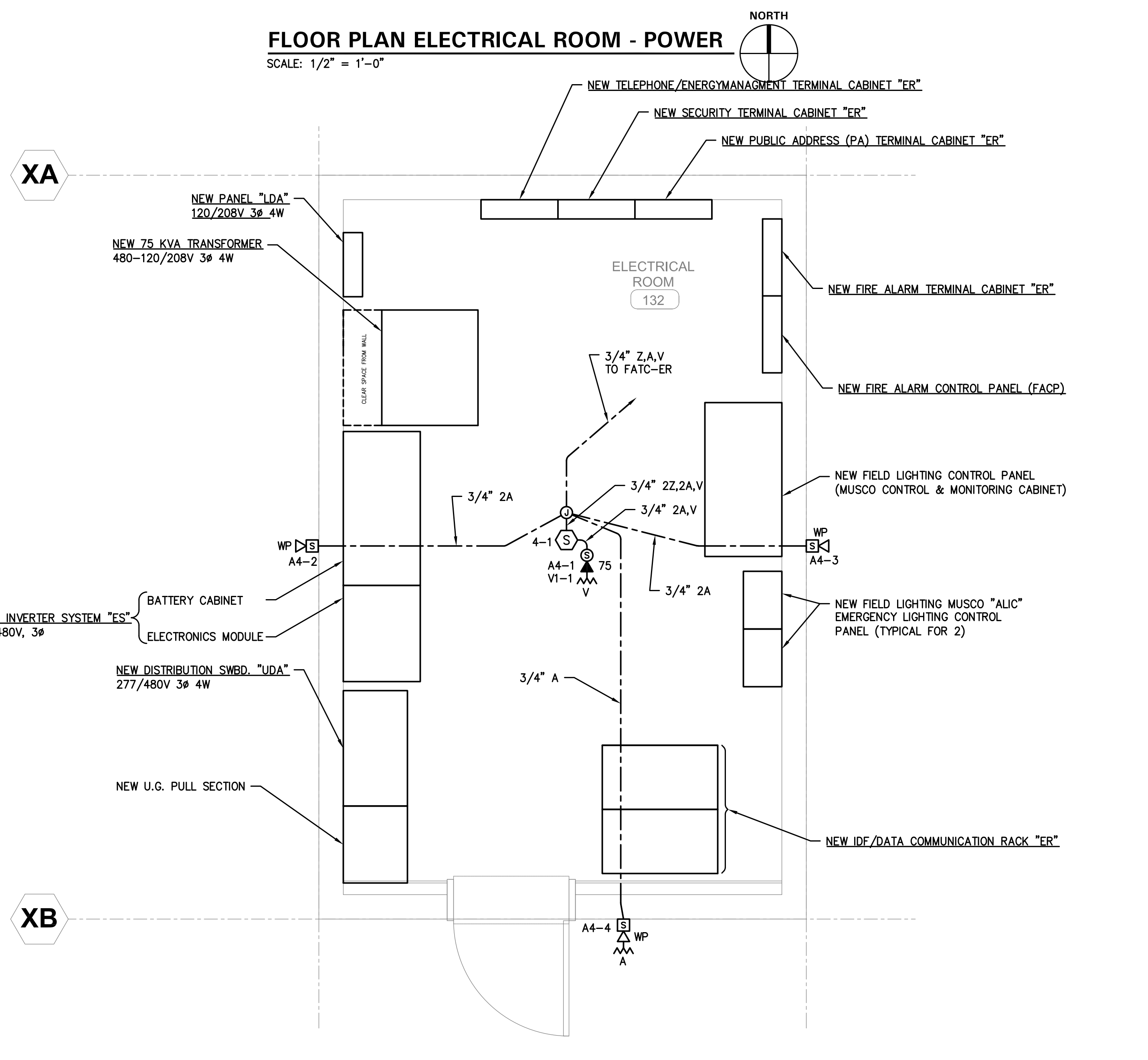
FLOOR PLAN ELECTRICAL ROOM - SIGNAL

SCALE: 1/2" = 1'-0"



FLOOR PLAN ELECTRICAL ROOM - POWER

SCALE: 1/2" = 1'-0"



FLOOR PLAN ELECTRICAL ROOM - FIRE ALARM

SCALE: 1/2" = 1'-0"